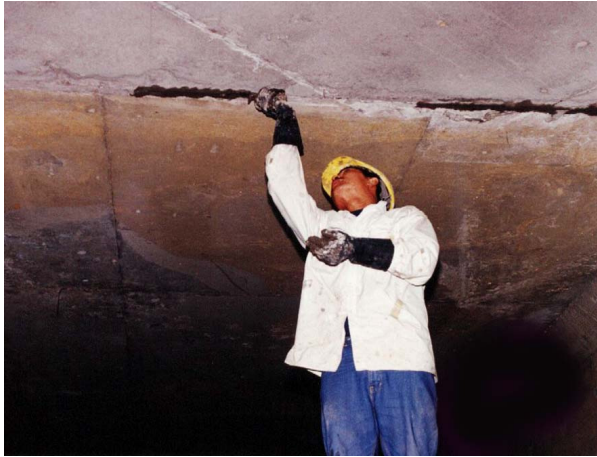


▶ Description



TamCrete Plug is a fast setting, hydraulic compound that instantly stops running water or seepage through masonry surfaces. It becomes harder and more resistant when subjected to moisture. TamCrete Plug is a non-shrink material that expands slightly and sets in about 70 seconds depending on the temperature of the mixing water and the surface to which it is applied. Lower temperatures will retard the set time; higher temperatures will accelerate the set time.

▶ Key Benefits

- Seals severe leaks
- Will withstand extreme hydrostatic pressure
- Exceptional durability
- Non-shrink
- Rapid setting (approximately 70 seconds)
- Can be applied under water
- Suitable for concrete, brick or masonry structures.
- Can be shaped after application

▶ Typical Applications

- Water cut-off
- Waterproof joint and crack surface sealant
- Pipe joints
- Emergency repairs
- Sealing cable and pipe entries
- Pointing in wet conditions

▶ Application Guidelines

**Mixing**

Mix TamCrete Plug with clean water only. Add just enough water to form a putty consistency.

Do not use more TamCrete Plug than can be placed in approximately 30 seconds, whilst allowing for only a 20 second mixing period. Place with minimum working or rubbing. Force TamCrete Plug into the crack or hole by pushing firmly; using maximum pressure. Keep damp for at least 15 minutes to help curing

To help key the material, always dovetail cut or cut square; do not use a V-cut. Open the crack or hole by cutting to a minimum depth and width of 20mm. Flush away all cuttings and dust.



**To seal floor / wall joints.**

Cut out the crack to a minimum width and depth of 20mm, while cutting back slightly into the wall. Flush away all cuttings and dust. Smooth out the crack by forcing a round tool inside. Form fillet at the junction.

**To seal flowing water.**

Cut out the crack or hole to a minimum width and depth of 20mm. Dovetail cut if possible. Start at the top and force TamCrete Plug into the crack. At points of greater pressure, do not place into the opening immediately. Hold in a gloved hand or on a trowel until slight warmth or drying occurs and then press firmly into opening. Do not remove trowel or hand too soon. After stopping active water, patch evenly with surrounding wall surfaces.

**To repair leaking mortar joints and cracks in masonry walls or cracks in concrete walls.**

Cut out defective mortar joints or cracks to a minimum width and depth of 20mm. Dovetail cut if possible. Force TamCrete Plug into the crack and keep damp for at least 15 minutes.

**For holes, blister patches, honeycombing and other construction faults in concrete walls.**

Remove all tie wires, wood or steel separators by cutting back from the surface to a depth of 25mm. Mix to the consistency of mortar and fill all holes, blisters, patches, honeycomb and other construction faults, flush with surrounding surfaces. Scratch the finish for later applications.

**For anchoring bolts or metal posts in concrete or masonry.**

Drill a hole deep enough to properly secure bolt or post and large enough so there is at least 13mm on all sides of the bolt or post. Fill the hole with TamCrete Plug and tamp so the entire hole is full. Immediately centre bolt or post over the hole and force the TamCrete Plug and tamp firmly around bolt or post; keep moist for 15 minutes. Apply no pressure to bolt or post for 6 hours.

**Above normal temperatures.**

TamCrete Plug begins to set very quickly when the temperature is above 25°C. For best results make sure product and mixing water are below 25°C at time of application, otherwise set will begin immediately and structural strength will be weakened. To slow down the setting action during warmer conditions use iced water to mix.

**Note:** Extreme weather conditions will retard or accelerate the TamCrete Plug setting time.

---

▶ Storage

---

TamCrete Plug should be stored at room temperature (min 10°C and max 38°C), kept dry and out of direct sunlight. If these conditions are maintained and the product packaging is unopened, then a shelf life of up to 12 months can be expected.

---

▶ Health & Safety

---

TamCrete Plug should only be used as directed. We always recommend that the Health & Safety data sheet is carefully read prior to application of the material. Our recommendations for protective equipment should be strictly adhered to for your personal protection. The Health & Safety data sheet is available upon request from your local TAM International representative.